

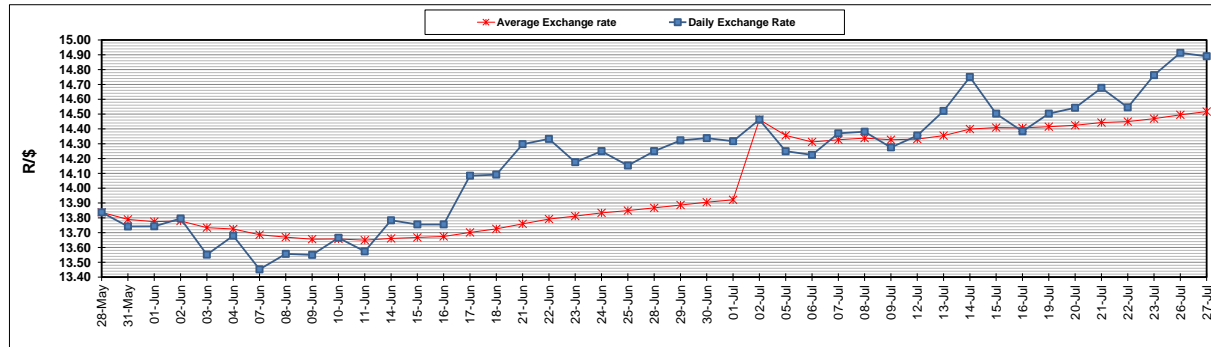
	PETROL 95 ULP	PETROL 93 ULP & LRP	DIESEL 0.05%	DIESEL 0.005%	ILL. PAR.
GAUTENG PUMP PRICE (SA c/l) AS FROM 07/07/2021	1,739.000	1,720.000	-	-	-
WHOLESALE PRICE (SA c/l) AS FROM 07/07/2021	-	-	1,508.620	1,512.020	913.488
SINGLE NATIONAL MAXIMUM RETAIL PRICE	-	-	-	-	1,150.000
BASIC FUEL PRICE - 27/07/2021 (SA c/l)	851.583	837.054	785.302	788.334	766.166
PRESS RELEASE CONTRIBUTION TO BFP 07/07/2021 - 27/07/2021 (SA c/l)	743.170	734.170	721.630	725.030	700.128
UNIT OVER/(UNDER) RECOVERY - 27/07/2021 (SA c/l)	(108.413)	(102.884)	(63.672)	(63.304)	(66.038)
AVERAGE BASIC FUEL PRICE 02/07/2021 - 27/07/2021	818.916	805.292	761.677	764.471	741.412
AVERAGE UNIT OVER/(UNDER) RECOVERY 02/07/2021 - 27/07/2021	(80.080)	(75.955)	(47.047)	(46.274)	(47.284)

### ANALYSIS MOVEMENT OF AVERAGE OVER/(UNDER) RECOVERY

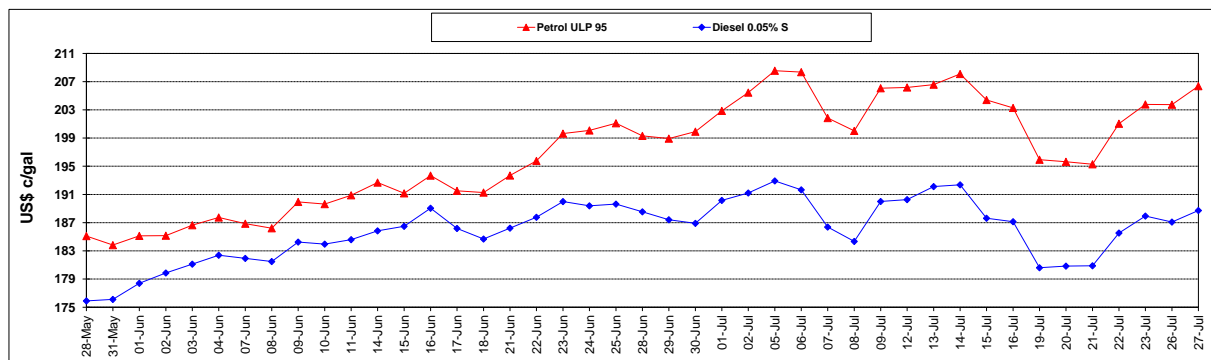
	PETROL 95	PETROL 93	DIESEL 0.05%	DIESEL 0.005%	ILL. PAR.
- MOVEMENT IN INTERNATIONAL PRODUCT PRICES	(46.509)	(42.943)	(15.823)	(14.936)	(16.891)
- MOVEMENT IN EXCHANGE RATE	(33.570)	(33.012)	(31.224)	(31.338)	(30.393)
AVERAGE UNIT OVER/(UNDER) RECOVERY 02/07/2021 - 27/07/2021	(80.080)	(75.955)	(47.047)	(46.274)	(47.284)

R/\$ EXCHANGE RATE - (R/\$14.8900- 27/07/2021)

### EXCHANGE RATE USED IN BASIC FUEL PRICE



### INTERNATIONAL PRODUCT PRICES OF BASKET USED IN BASIC FUEL PRICE



### BASIC FUEL PRICE IN SA CENTS PER LITRE

